

FULTON CROSSING

 9815 Fulton Park Ln
Houston, TX 77076



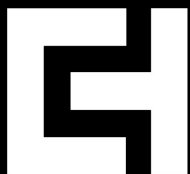
\$299,990 - \$349,990

2" FAUX WOOD BLINDS

COMMUNITY DOG PARK

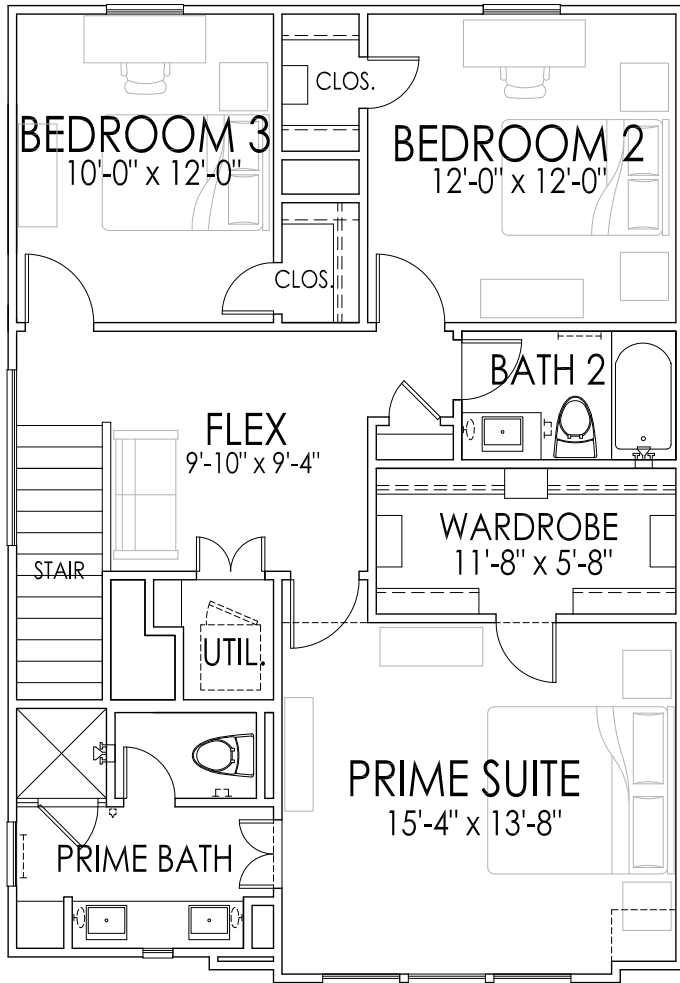
SAMSUNG APPLIANCES

DISCOVER YOUR SPACE™

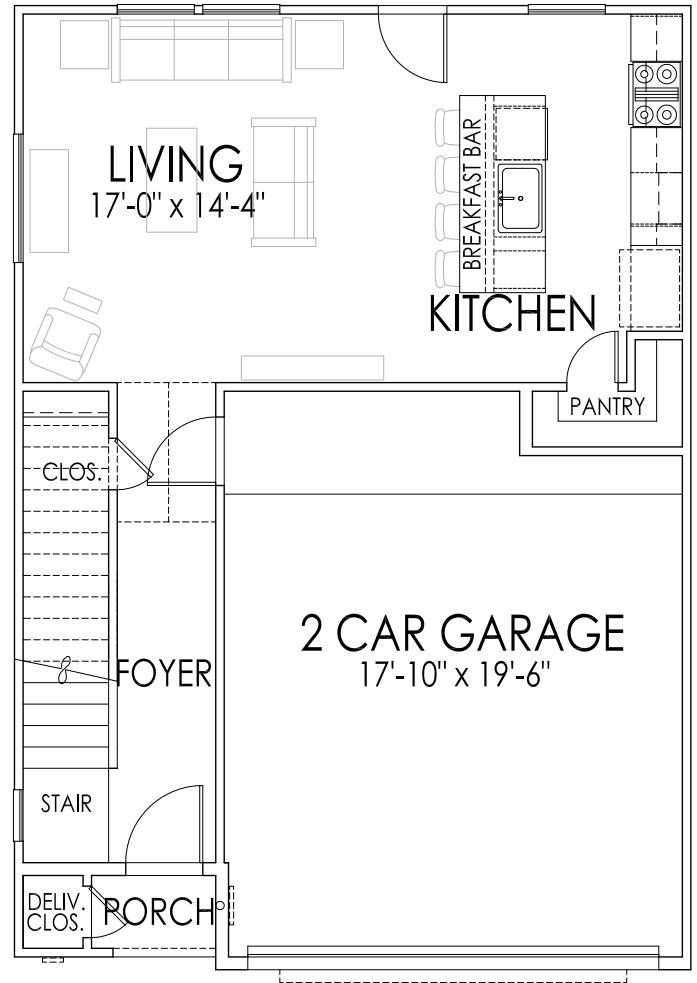


WWW.CITYSIDEHOMES.COM





SECOND FLOOR

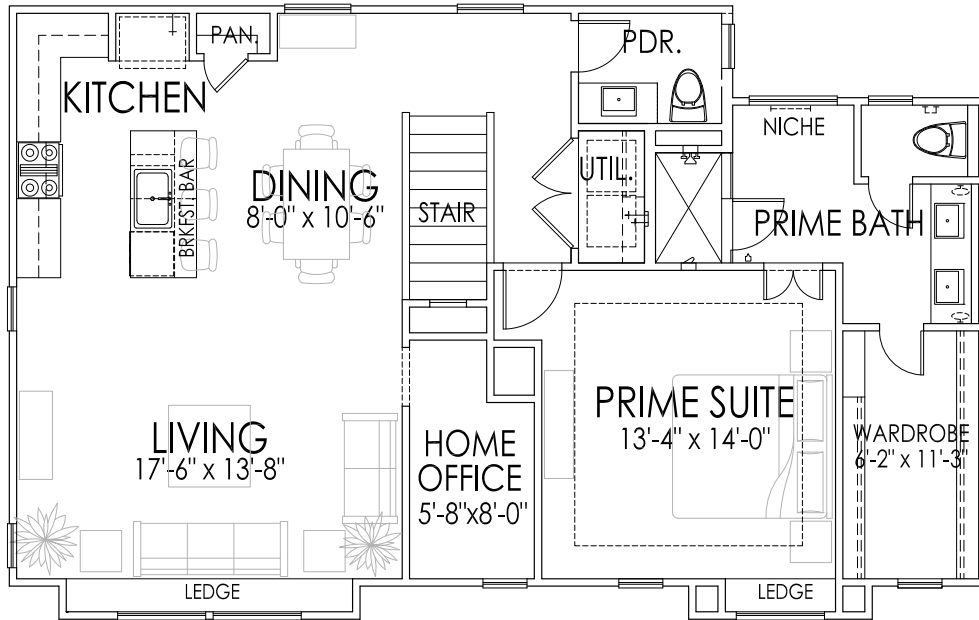


FIRST FLOOR

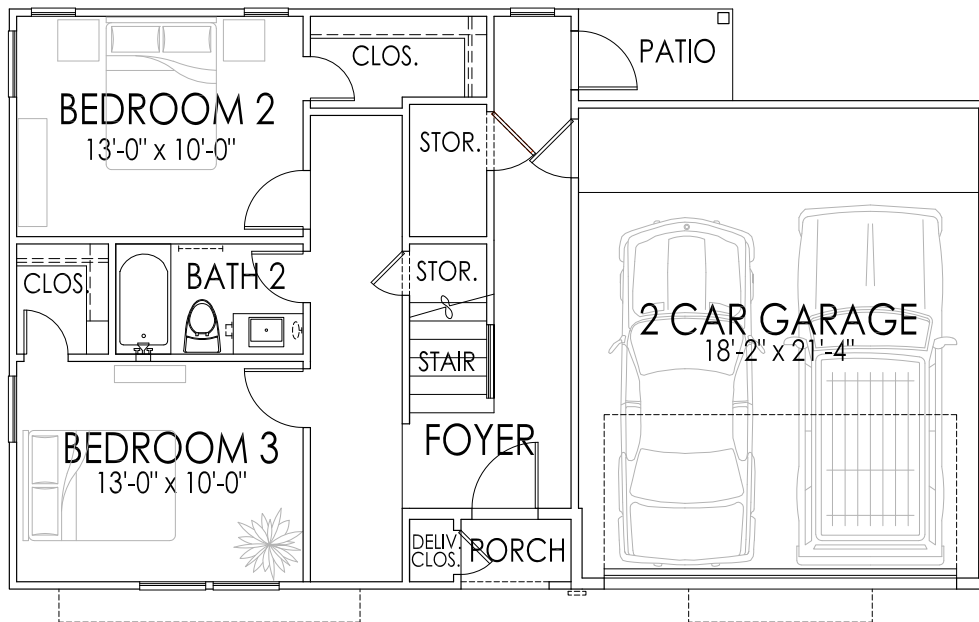
PLANS BY:  **CITYDESIGN**
Land Planning & Residential Design

SQUARE FOOTAGES

FIRST FLOOR:	562
SECOND FLOOR:	934
TOTAL LIVING:	1496 S.F.



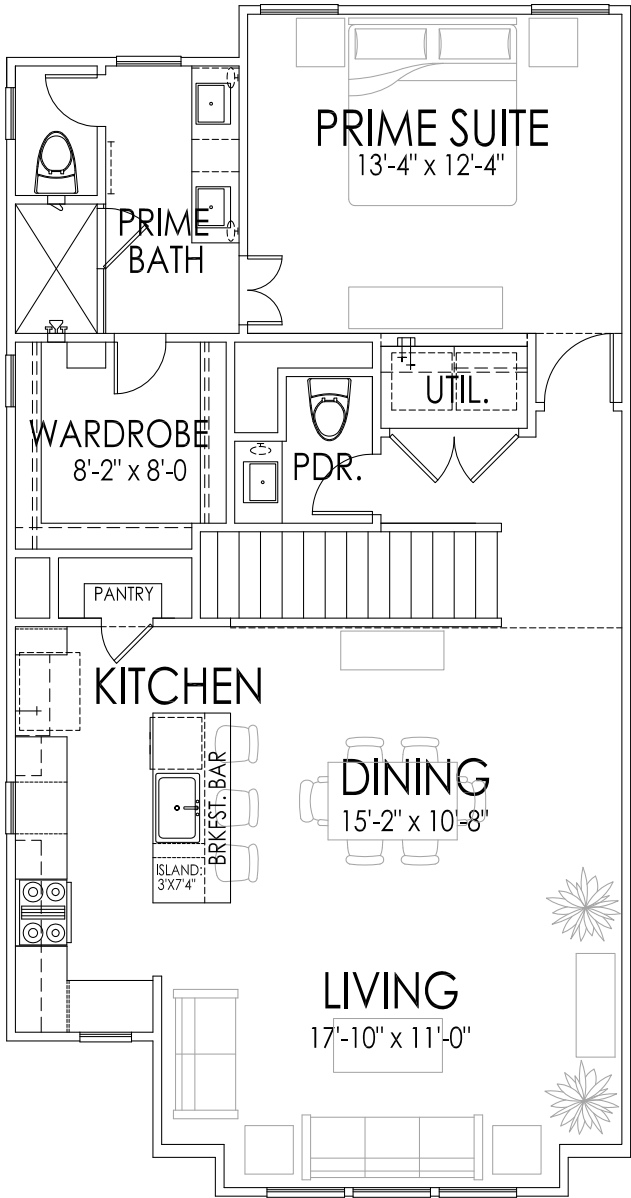
SECOND FLOOR



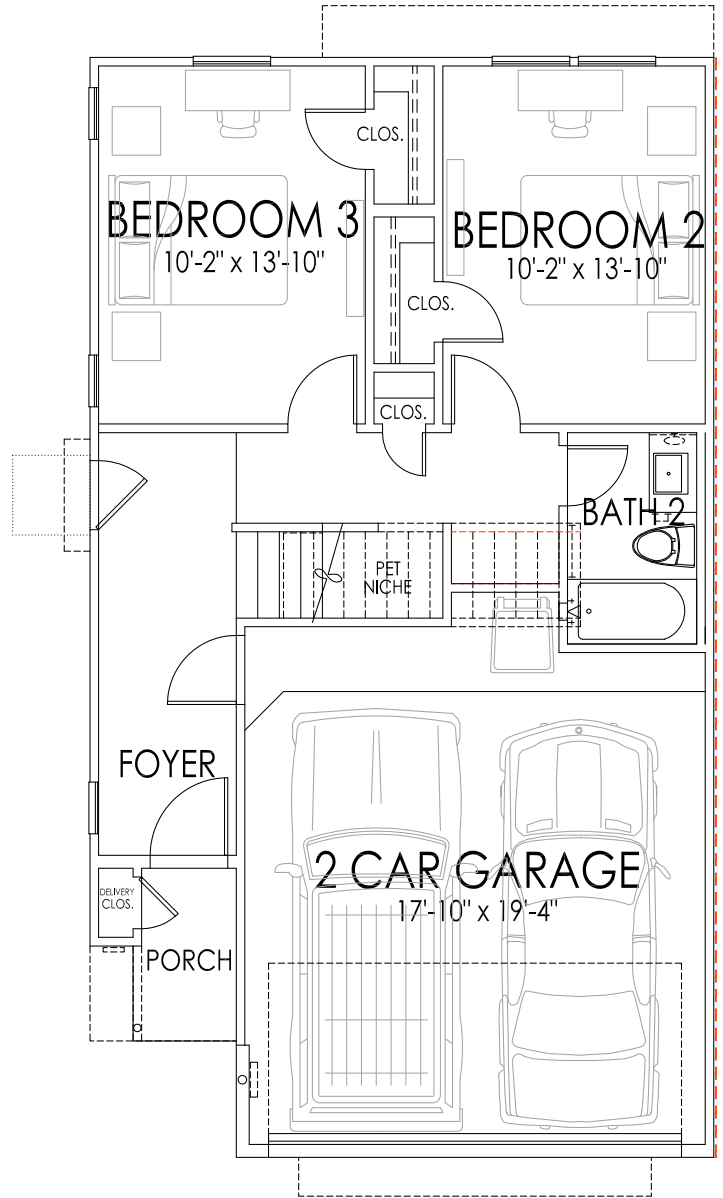
FIRST FLOOR

SQUARE FOOTAGES

FIRST FLOOR:	658
SECOND FLOOR:	1090
TOTAL LIVING:	1748 S.F.



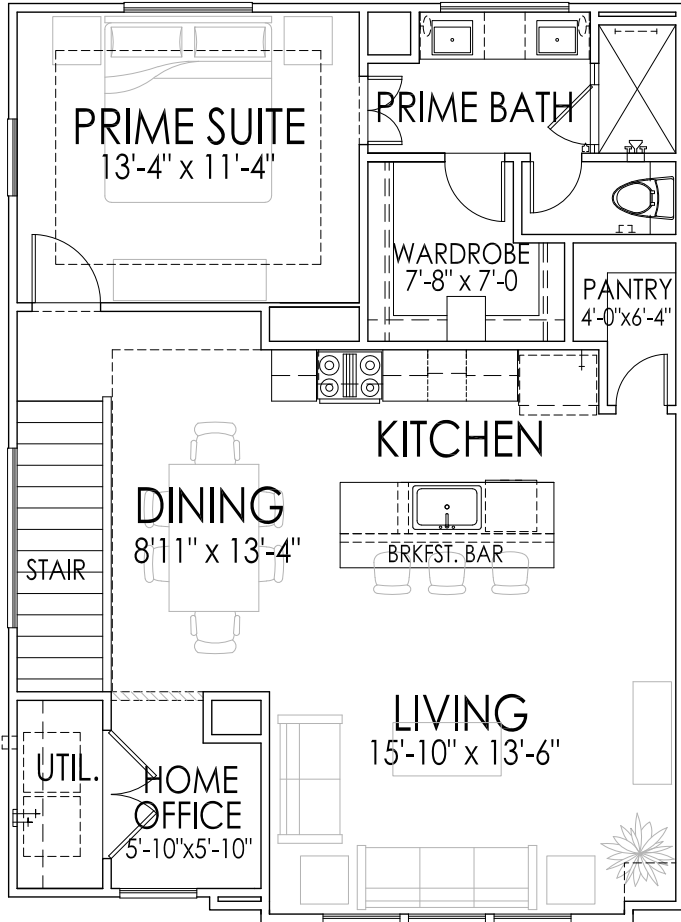
SECOND FLOOR



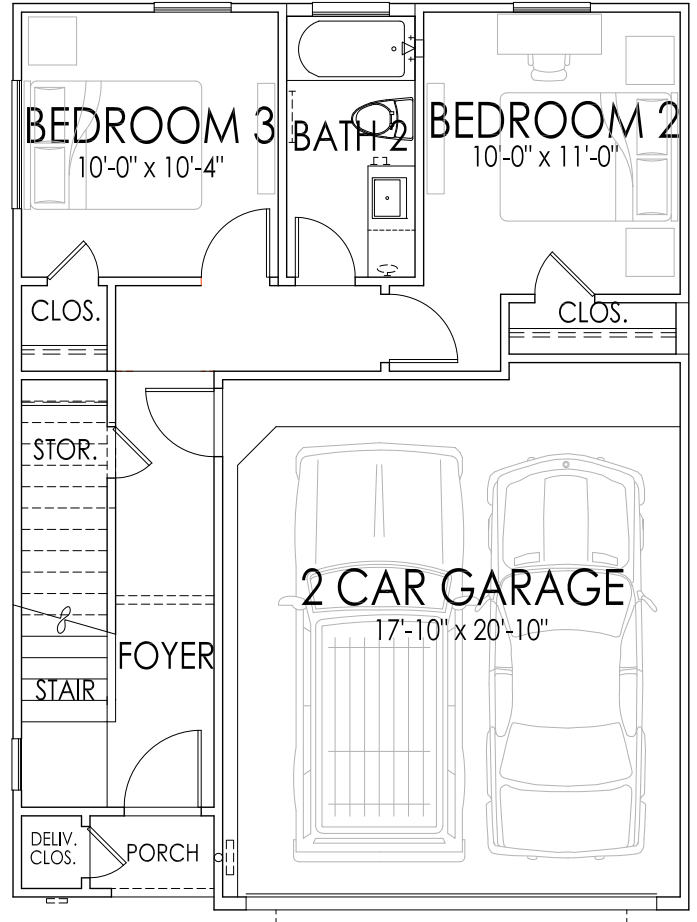
FIRST FLOOR

SQUARE FOOTAGES

FIRST FLOOR:	594
SECOND FLOOR:	1030
TOTAL LIVING:	1624 S.F.



SECOND FLOOR

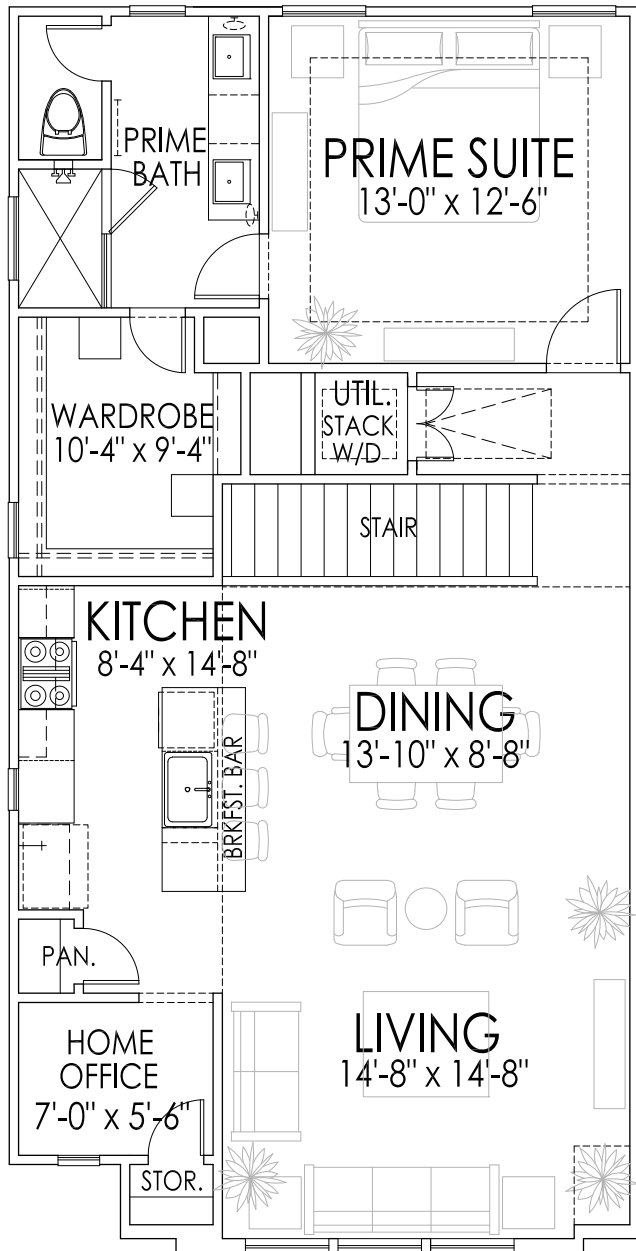


FIRST FLOOR

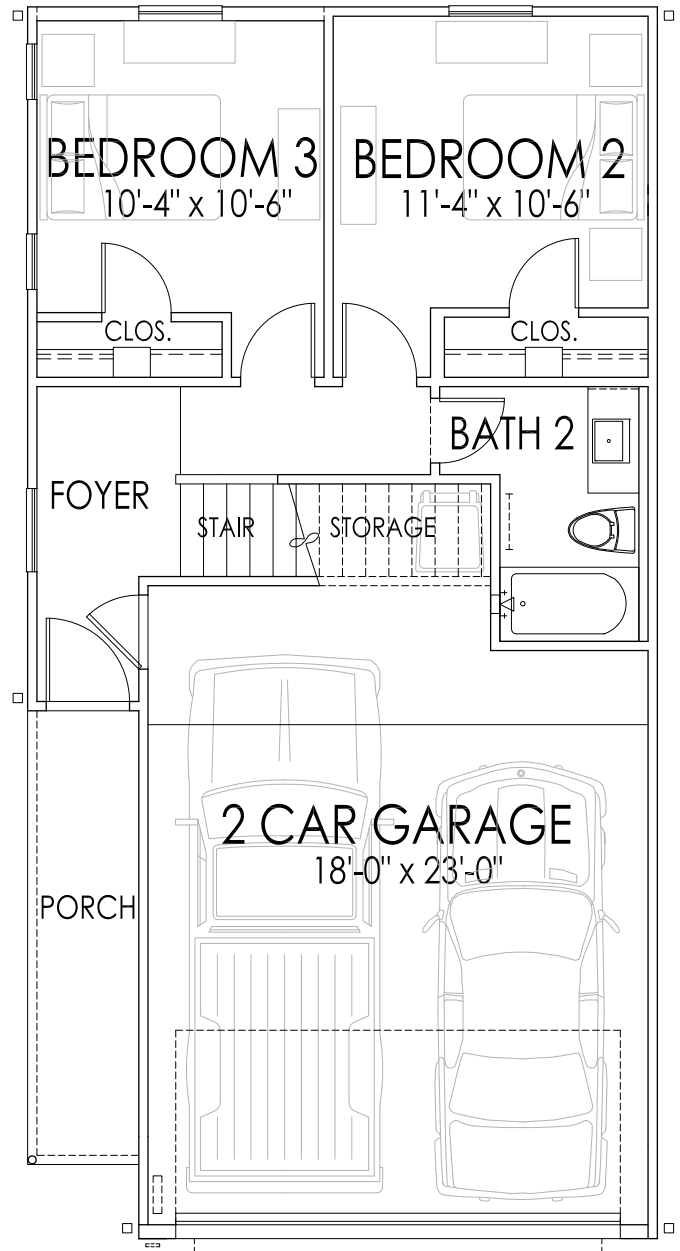
PLANS BY:  CITYDESIGN
Land Planning & Residential Design

SQUARE FOOTAGES

FIRST FLOOR:	526
SECOND FLOOR:	870
TOTAL LIVING:	1396 S.F.



SECOND FLOOR



FIRST FLOOR

PLANS BY:  **CITYDESIGN**
Land Planning & Residential Design

SQUARE FOOTAGES

FIRST FLOOR:	490
SECOND FLOOR:	978
TOTAL LIVING:	1468 S.F.



SOLD P2

46 Dipping Ln
SOLD

3	2	1396
Beds	Baths	Sq. Ft.

MOVE IN READY

SOLD P2

64 Dipping Ln
SOLD

3	2	1496
Beds	Baths	Sq. Ft.

MOVE IN READY

9285 PLAN P3

9803 Fulton Park Ln
\$329,990

3	2/1	1624
Beds	Baths	Sq. Ft.

MOVE IN READY

9215 PLAN P1

9815 Fulton Park Ln
\$299,990

3	2	1496
Beds	Baths	Sq. Ft.

MODEL

9236 PLAN P3

13 Fulton Row Ln
\$349,990

3	2	1748
Beds	Baths	Sq. Ft.

AVAILABLE JUNE 2026

9293 PLAN P3

16 Fulton Row Ln
\$319,990

3	2	1468
Beds	Baths	Sq. Ft.

MOVE IN READY

9236 PLAN P3

17 Fulton Row Ln
\$349,990

3	2	1748
Beds	Baths	Sq. Ft.

AVAILABLE JUNE 2026

HOA
\$1,195 Landscaping, sprinklers, gates, and dog park. **\$125** Monthly for water, sewer, trash, and recycling.

FOR NEW HOME SALES CONTACT SO HOU REALTY GROUP!

832-280-5455
SOHOURREALTY.COM

"Explore your perfect dream home here in Houston!"